

# Bucher Prairie



The park is 20 acres in size and contains an intermittent tributary of Slip Up Creek. The park offers a panoramic view of the Slip Up Creek Valley.



To reserve picnic shelter, please call 605-367-4204 or complete form online at County Parks webpage.

- *Alcohol is NOT PERMITTED*
- *Pets must be kept on leash*

N:\planning\Parks\BucherPrairie\DisplayCaseBrouchure.pdf

Mr. Lyle Bucher donated a 20-acre portion of the Eva Bucher estate to Minnehaha County on June 16, 2009.

Mr. Bucher requested that this park be a reflection of the prairie that would have been historically present on the site.



Big Bluestem Grass

Indian Grass



Pasque Flower

Prairie Cord Grass



Prairie Clover

Coneflower



Goldenrod

## Minnehaha County Parks

Bucher Prairie: 25393 487th Ave Garretson SD  
Wall Lake Park: 46290 266th St. Hartford SD  
Perry Nature Area: 1901 S Perry Pl. Sioux Falls SD



Park Supervisor: John Mork  
Phone: 605-367-4204  
Fax: 605-367-7413  
<http://parks.minnehahacounty.org>

## Minnehaha County Parks



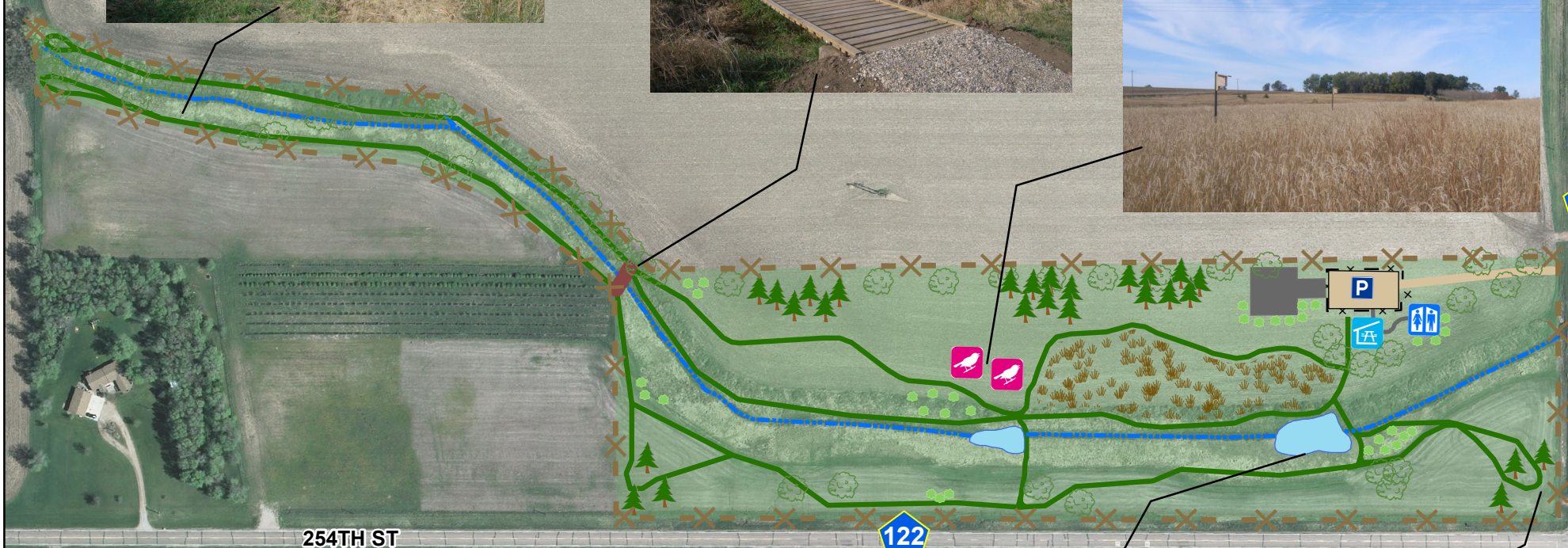
## *Bucher Prairie Information Brochure & Map*

*Bucher Prairie  
25393 478th Ave  
Co. Hwy 121 & Co. Hwy 122  
Garretson, SD*

*Hours: Dusk to Dawn*



# Bucher Prairie Trails Map



254TH ST

122

121

478TH AVE

## Legend

1.5 miles of Trails

- Parking
- Picnic Shelter
- Restroom
- Bird House
- Evergreen
- Shrub
- Tree

